

ENTREPRENEURSHIP LEADERSHIP AND DISABILITY

Garret Westlake
Arizona State University

THE ANTHOLOGY

- ◎ History of students with disabilities in higher education
 - Section 504, ADA, ADAAA
- ◎ Traditional models of engagement
 - Enabling vs. Empowering
- ◎ Employment of students with disabilities
 - Lack there of
- ◎ The Entrepreneurship Model
 - Kickstarter, EntryPoint, Workforce Recruitment

THE EARLY YEARS

◎ The Rehab Act of 1973

- Any institution that accepts federal funds must assure that programs are accessible
- Ex. Classes moved from 2nd floor to 1st floor
- Little to no enforcement
- Early advocates were returning veterans
- Did not increase the number of students with disabilities



Image of Tony Orlando and Dawn

A MOVEMENT GOES MAINSTREAM

- ◎ **Americans with Disabilities Act (ADA) 1990**
 - Provided comprehensive protections
 - Represented disability as a civil rights issue
 - Enforceable
- ◎ **Individuals w/Disabilities Education Act 1990**
 - K-12 law that provides mandated education for children with disabilities
 - Leads to greater numbers of students transitioning to higher education

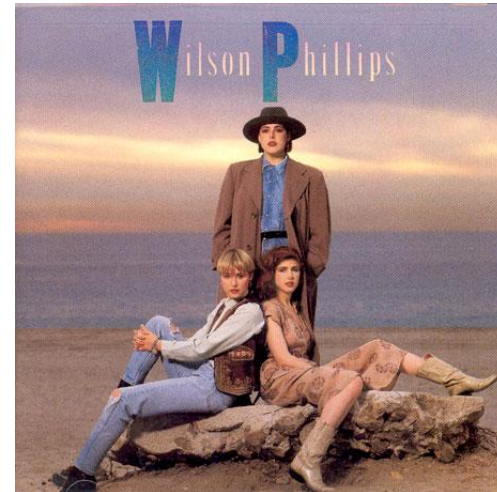


Image of Wilson Phillips

DISABILITY SERVICES IN HIGHER ED.

- ◎ Support a growing population
 - 1978 less than 3%
 - 2000 approximately 9%
 - 2010 approximately 11%
- ◎ Promote equal access
 - Academic accommodations
 - Campus access
 - Inclusion / Universal Design

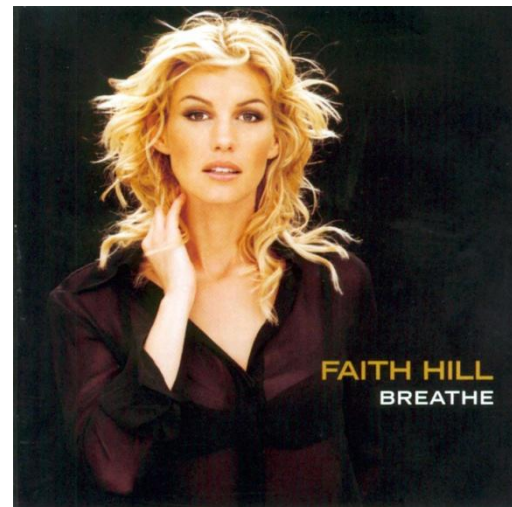


Image of Faith Hill

A NEW GENERATION

- Autism Spectrum Disorders provide unique challenges
 - Academically talented students who struggle with social integration
 - Poor employment outcomes
- What we learn from this new population
 - There is a need for a new approach in DS
 - Access now interpreted to be the student experience and subsequent opportunities



Image of Lady Gaga

AN ENTREPRENEURIAL SOLUTION

- ◎ ASU Pilot in spring 2010
 - 7 students with ASD
 - Project based: [Link to Kickstarter website](#)
 - Student outcomes
 - NASA, IBM, and independent ventures
- ◎ Skills Developed Through Entrepreneurship
 - Leadership
 - Communication
 - Work experience
 - Self confidence
 - Networking

ADOPTING ENTREPRENEURSHIP

- ◎ ASU's 10k Solutions Initiative
 - [Link to ASU 10k Solutions](#)
- ◎ Entrepreneurship as student leader development
 - Academic classes
 - Residential Life
 - Student support staff
- ◎ Recognizing Student Success
 - [Link to ASU Entrepreneurship](#)

QUESTIONS?

Garret Westlake
Region VI Disability KC Representative
Director, Disability Resource Center
Arizona State University Polytechnic
Garret.Westlake@asu.edu
480-727-1039